

Instruction Sheet



800-900 MHz Circularly Polarized Antenna in Die Cast Enclosure

Step 1: Determine which holes will be required and then with the enclosure supported on the edge of a sturdy bench, use a flat blade screwdriver and a hammer to remove the necessary knockouts. Strike the hole at the edge farthest away from the opening of the enclosure. Note: The back hole is designed for those cases where the enclosure needs to be mounted directly to the back of an antenna or where an invisible connection needs to be made thru a wall.

Step 2: Clean up any undesirable flash in the hole with a round file.

Step 3: The enclosure has 4 8-32 threaded standoffs in the bottom and an included customer installation plate. Customer should mount his electronics to this plate.

Step 4: The enclosure can be mounted to a wall using lag bolts or masonry screws. It can also be attached to a pole using the included pole clamps and U-bolts or tilt bracket. When attaching to a pole always make sure the pole clamp is between the enclosure and the pole as shown in the picture. This prevents stress on the flange which could lead to cracking.



Remove Knockout



Hinged Antenna Cover Assy

Models

Integrated 902-928 MHz Antenna

DCE9028PRFSMF: Right hand circular polarization

DCE9028PLFSMF: Left hand circular polarization

Integrated 865-868 MHz Antenna

DCE8658PRFSMF: Right hand circular polarization

DCE8658PLFSMF: Left hand circular polarization

Integrated Wide-Band Antenna

DCE8658WPRFSMF: Right hand circular polarization

DCE8658WPLFSMF: Left hand circular polarization



*Die Cast Enclosure with
Integrated Antenna*



Pole Mount

Specifications

<i>Knockouts (Qty 11)</i>	Qty 3 0.810" Diameter hole Qty 8 0.625" Diameter hole, Double D
<i>Knockout Locations</i>	Qty 5 on bottom, Qty 3 on Right Side, Qty 2 on Top and Qty 1 in Back
<i>Internal Standoffs (Qty 4)</i>	8-32 Tapping, 8" x 8" centers, 0.25" height
<i>Useable Interior Space</i>	10" x 10" x 2" (254 x 254 x 51mm)
<i>Mounting</i>	1" to 2" pole using included bracket kit, or wall mount using user supplied screws
<i>Cover Seal</i>	High Performance EPDM Gasket
<i>Solar Heat Rise</i>	Internal Temperature \leq 4 deg C above External Ambient
<i>Overall Size (L x W x H)</i>	12.5" x 10.4" x 3.9" (317 x 264 x 99mm)
<i>Antenna Connector</i>	SMA (f)
<i>Weight</i>	5.4lb (2.4kg)

Notes:

1. Security screws, such as torx head screws, can be used if it's desired that the cover be removed only by qualified personnel.
2. Grounding is normally accomplished thru the pole attach. If wall mounting, the installer should make sure there is a ground wire running from one of the lag bolts to an earth ground. Some paint may need to be scraped from the flange area to affect a strong ground.
3. Any feed thru connections like bulkhead connectors or RJ45 feed thru's should be gasketed so that they are weatherproof.
4. Pacific Wireless offers a line of accessories like cable assemblies, POE adapters and RJ45 field replaceable connectors to lower the installation cost of the enclosures.

164-00004 _GF_AA

DCE9028PRFSMF / DCE9028PLFSMF	
Specifications	
Frequency	902-928 MHz
Gain	9 dBic
Beamwidth	54 ° x 54 °
VSWR	<1.20:1
Axial ratio	2 dB
Polarization	Right or Left Hand Circular
RF Connector	SMA (female)

DCE8658PRFSMF / DCE8658PLFSMF	
Specifications	
Frequency	865-868 MHz
Gain	8.5 dBic
Beamwidth	70 ° x 70 °
VSWR	<1.50:1
Axial ratio	2 dB
Polarization	Right or Left Hand Circular
RF Connector	SMA (female)

DCE8658WPRFSMF / DCE8658WPLFSMF	
Specifications	
Frequency	865-960 MHz
Gain	8.5 dBic
Beamwidth	65 ° x 65 °
VSWR	<1.40:1
Axial ratio	1 dB Typical
Polarization	Right or Left Hand Circular
RF Connector	SMA (female)

LIMITED WARRANTY

LAIRD TECHNOLOGIES, P.O. BOX 4680, MANCHESTER, NEW HAMPSHIRE 03108, WARRANTS TO THE ORIGINAL CONSUMER PURCHASER FOR TWO YEARS FROM DATE OF PURCHASE THAT EACH LAIRD TECHNOLOGIES ANTENNA IS FREE OF DEFECTS IN MATERIAL OR WORKMANSHIP. IF, IN THE JUDGMENT OF LAIRD, ANY SUCH ANTENNA IS DEFECTIVE, THEN LAIRD TECHNOLOGIES WILL, AT ITS OPTION, REPAIR OR REPLACE THE ANTENNA AT ITS EXPENSE WITHIN THIRTY DAYS OF THE DATE THE ANTENNA IS RETURNED (AT PURCHASER'S EXPENSE) TO LAIRD OR ONE OF ITS AUTHORIZED REPRESENTATIVES. THIS WARRANTY IS IN LIEU OF ALL OTHER EXPRESSED WARRANTIES, ANY IMPLIED WARRANTY IS LIMITED IN DURATION TO ONE YEAR. LAIRD TECHNOLOGIES SHALL NOT BE LIABLE FOR ANY INCIDENTAL OR CONSEQUENTIAL DAMAGES WHICH MAY RESULT FROM A DEFECT. SOME STATES DO NOT ALLOW LIMITATIONS ON HOW LONG AN IMPLIED WARRANTY LASTS OR EXCLUSIONS OR LIMITATIONS OF INCIDENTAL OR CONSEQUENTIAL DAMAGES, SO THE ABOVE LIMITATION AND EXCLUSION MAY NOT APPLY TO YOU. THIS WARRANTY GIVES YOU SPECIFIC LEGAL RIGHTS, AND YOU MAY ALSO HAVE OTHER RIGHTS WHICH VARY FROM STATE TO STATE. THIS WARRANTY DOES NOT EXTEND TO ANY PRODUCTS WHICH HAVE BEEN SUBJECT TO MISUSE, NEGLIGENCE, ACCIDENT OR IMPROPER INSTALLATION, ANY REPAIRS OR ALTERATIONS OUTSIDE OF THE LAIRD TECHNOLOGIES FACTORY WILL NULLIFY THIS WARRANTY.

SPECIFICATIONS SUBJECT TO CHANGE WITHOUT NOTICE

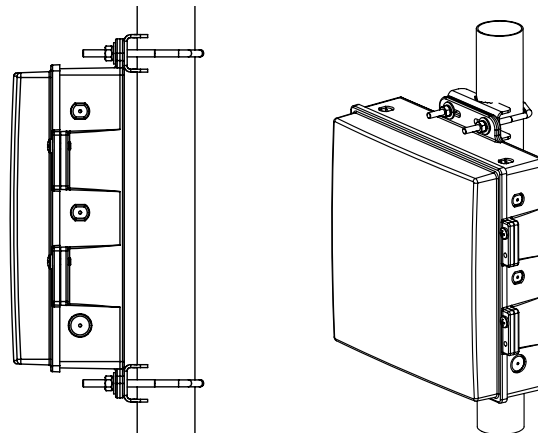
Warranty and Liability

LAIRD TECHNOLOGIES shall not be liable for any incidental or consequential damages which may result from a defective, or use, or improper or otherwise or installation, improper or otherwise.
Please contact your vendor for technical support and warranty service

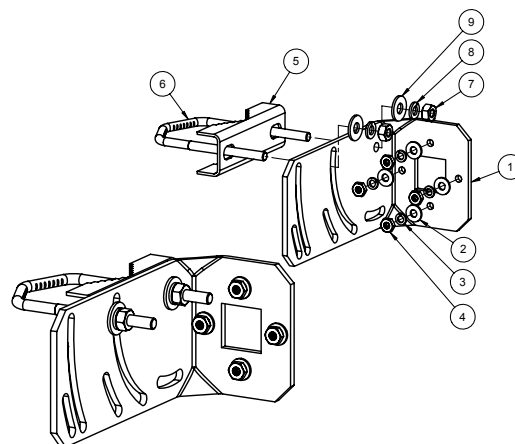
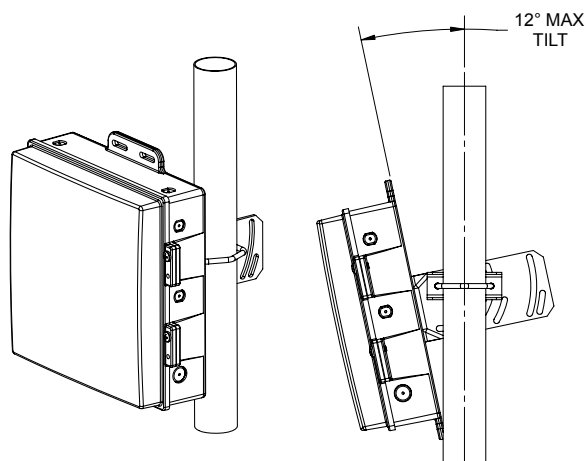
Laird
TECHNOLOGIES®

48 PERIMETER ROAD, MANCHESTER, NH 03103
Tel: 603-627-7877-Fax: 603-627-1764
email: sales@cushcraft.com - web: www.cushcraft.com

Mounting Options



Rigid Mast Mount



9	017868	WASHER, FLAT, [1/4"], SS, PA	2
8	010084	WASHER, SPLIT-LOCK, 1/4	2
7	010085	NUT, HEX, [1/4-20], SS, PA	2
6	5600631	U-BOLT, 100 X 63.5 CENTERS, 1/4-20 THD	1
5	195726	"V" BRACKET, MAST CLAMP	1
4	018248	NUT, HEX, 10-32, SS, PA	4
3	010233	SCREW, SLOCK, #10, SS, PA	4
2	015060	WASHER, FLAT, #10, SS, PA	4
1	5600689	BRACKET, L, TILT, HD, THRU HOLE	1
ITEM NO.	PART NUMBER	DESCRIPTION	QTY.

Tilt Mast Mount